

POMPANO BEACH FIRE / EOC FACILITY

2121 NW THIRD AVENUE
POMPANO BEACH, FL 33060

[illegible][illegible]

DESIGN DESIGN
DELIVERABLE: DEVELOPMENT
ISSUE DATE: 10/02/2025

PROJECT NUMBER: 2024-0559.0000

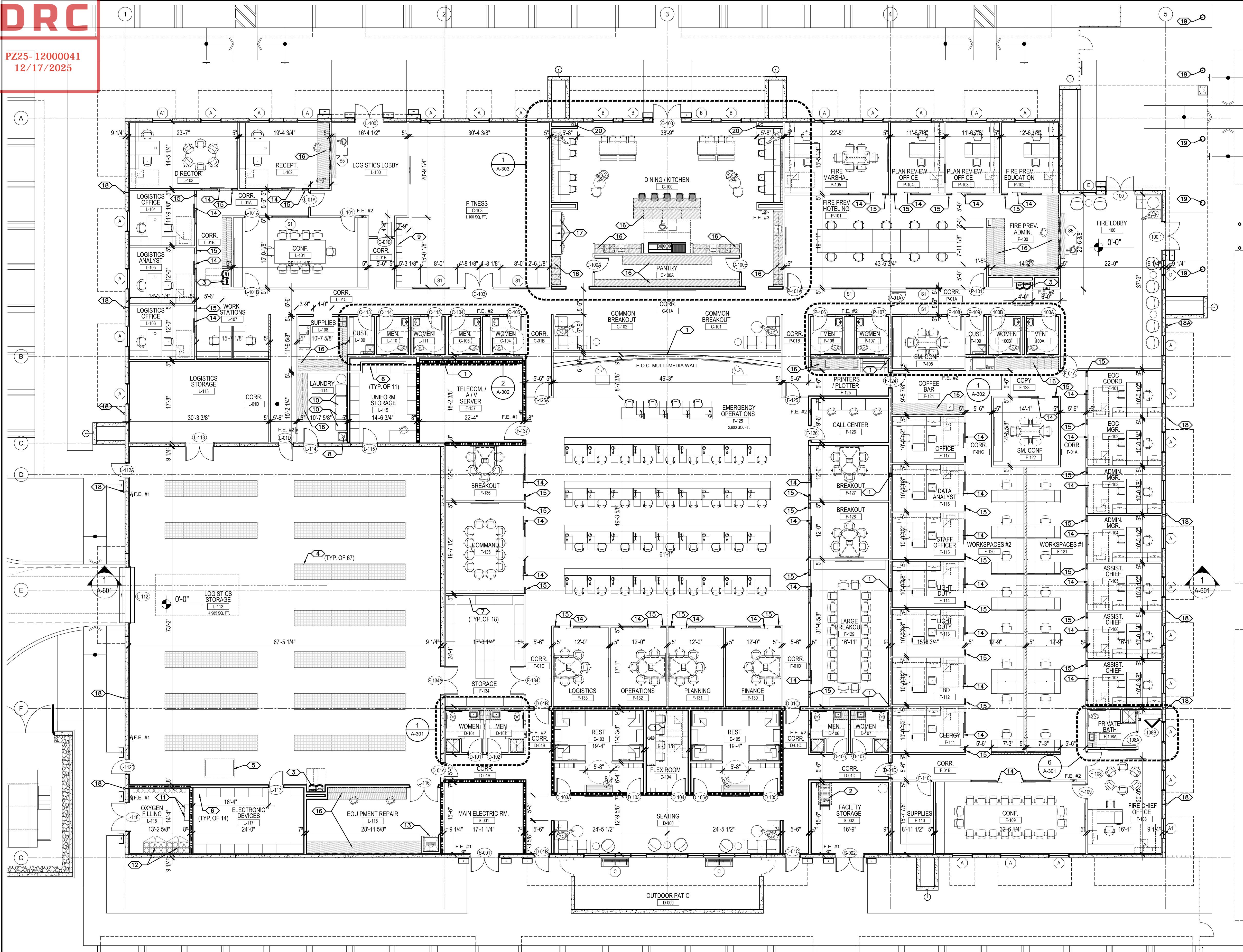
CHECKED BY: MR

SHEET TITLE:

FLOOR PLAN

SHEET NUMBER:

A-101



NOTE:
ASSUMED DATUM 0'-0" IS EQUAL TO
17.80' NAVD 88 (REFER TO CIVIL
DRAWINGS).

NOTE:
REFER TO 1/A-701 FOR WALL TYPES
AND A-901 FOR WALL TYPE TAGS.

- 1 STEEL COLUMN CENTERED ON WALL PARTITION (REFER TO STRUCTURAL DWG'S FOR ADDITIONAL INFORMATION).
- 2 ROOF HATCH AND ALTERNATING STEP LADDER (REFER TO 5 & 6/A-703).
- 3 HI-LOW ELECTRIC DRINKING FOUNTAIN WITH BOTTLE FILLER (REFER TO 11/A-301 AND 14/A-301, ITEM 20).
- 4 RIDG-U-RAK STORAGE SYSTEMS, 48" WIDE X 42" DEEP X 192" HIGH, WITH 20,600 LB CAPACITY, MODEL #UF-S321-16.00-42.00A01-00-0100 OR APPROVED EQUAL.
- 5 MOBILE STOCK PICKER LIFT AS MFGRD. BY ZHEJIANG DINGLI MACHINERY CO., LTD., MODEL #ZDYT3-3.75 (N.I.C., BY OWNED).
- 6 36" WIDE X 24" DEEP X 72" HIGH STEEL SHELVING AS MFGRD. BY "PARSTEEL STORAGE SOLUTIONS SECURED TO PARTITION AGAINST ALL WALLS.
- 7 48" WIDE X 24" DEEP X 72" HIGH STEEL SHELVING AS MFGRD. BY "PARSTEEL STORAGE SOLUTIONS SECURED TO PARTITION AGAINST ALL WALLS OR BOLTED TOGETHER AT FREESTANDING LOCATIONS.
- 8 LAUNDRY UTILITY SINK AS MFGRD. BY "MUSTEE", MODEL #19CF UTIATUB COMBO.
- 9 TWELVE (12), 72" 4 TIER METAL LOCKERS, 15" WIDE ON 6" CONCRETE PAD AS MFGRD. BY "PENCO PRODUCTS, INC." OR APPROVED EQUAL.
- 10 STANDARD INDUSTRIAL TYPE WASHER AND DRYER WITH "ENERGY STAR" RATING. PROVIDE ALL PLUMBING AND ELECTRICAL REQUIREMENTS FOR FULL OPERATION.
- 11 TWO (MCF5) - MOBILE CONTAINMENT FILL STATIONS FOR OXYGEN CYLINDER CANISTERS AS MFGRD. BY "MAKO". MODEL #MCF5-OXY.
- 12 TWO 60"W X 30"D X 65"H VERTICAL OXYGEN CYLINDER STORAGE CABINET WITH DOUBLE DOORS AS MFGRD. BY "GLOBAL INDUSTRIAL", MODEL #270255.
- 13 EMERGENCY EYE WASH AND SHOWER WITH TRENCH DRAIN (REFER TO X / X-XXX).
- 14 GC SHALL PROVIDE DEMOUNTABLE SYSTEM. REFER TO DOOR SCHEDULE FOR ADDITIONAL INFORMATION. ALL GLASS SHALL BE 3/8" CAT II SAFETY GLASS, CLEAR AND TEMPERED. FINISH BLACK MATTE FRAMES AND HARDWARE.
- 15 AKUPANEL (WC-4). (REFER TO 5 / A-309).
- 16 NEW MILLWORK UNIT. PROVIDE BLOCKING AS REQUIRED. GC SHALL COORDINATE ALL MILLWORK WITH EQUIPMENT. (REFER TO SHEETS A-301 THRU A-306).
- 17 GC SHALL PROVIDE WATERLINE CONNECTION FOR REFRIGERATORS. GC SHALL COORDINATED IN THE FIELD TO ALLOW APPLIANCES TO BE FULLY RECESSED IN MILLWORK.
- 18 6" WIDE X 5" DEEP (22 GAUGE) PRE-FINISHED ALUMINUM DOWNSPOUTS WITH COLLECTOR HEAD, ELBOWS, WALL STRAPS, ETC. FOR A COMPLETE SYSTEM. FASTEN DOWNSPOUTS TO CONCRETE TILT WALL PANELS WITH MATCHING (.025 IN.) ALUMINUM STRAPS AT 48" O.C. FIGURE G, PLATE 34, SMACNA. FASTEN TO WALL WITH 1/4" X 1 1/4" S.S. DRIVING PINS. CONNECT ALUM. DOWNSPOUTS TO PVC STORM DRAIN PIPING AT GRADE (REFER TO X / X-XXX AND CIVIL DRAWINGS FOR ADDITIONAL INFORMATION).
- 18A 6" WIDE X 5" DEEP (22 GAUGE) PRE-FINISHED ALUMINUM DOWNSPOUTS WITH COLLECTOR HEAD, ELBOWS, WALL STRAPS, ETC. FOR A COMPLETE SYSTEM. FASTEN DOWNSPOUTS TO CONCRETE TILT WALL PANELS WITH MATCHING (.025 IN.) ALUMINUM STRAPS AT 48" O.C. FIGURE G, PLATE 34, SMACNA. FASTEN TO WALL WITH 1/4" X 1 1/4" S.S. DRIVING PINS. CONNECT ALUM. DOWNSPOUTS TO PVC STORM DRAIN PIPING AT GRADE (REFER TO X / X-XXX AND CIVIL DRAWINGS FOR ADDITIONAL INFORMATION).
- 19 BEGA BOLLARD TUBE 84 705 IN SILVER POLYESTER COATING. IMPACT OF TRUCK < 7.5 TONS, SPEED < 50 KILOMETERS / HOUR. INSTALL A COMPLETE CONCRETE STRUCTURAL FOUNDATION AS REQ'D. (REFER TO X / X-XXX).
- 20 6" DIAMETER STORM WATER ROOF DRAIN IN VERTICAL CHASE (REFER TO ROOF PLAN, PLUMBING & CIVIL DRAWINGS FOR ADDITIONAL INFORMATION).

